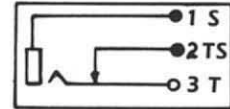
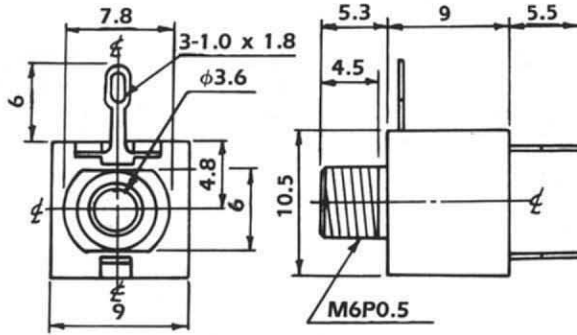
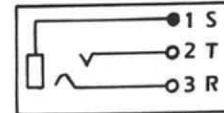
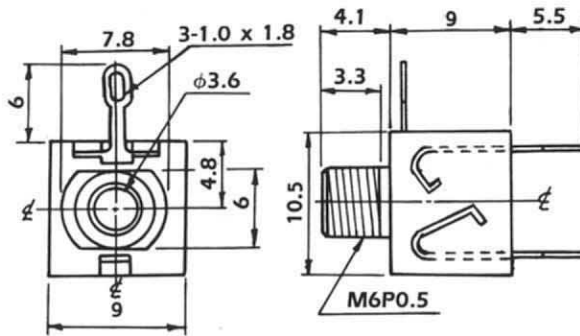


3.5 ϕ EARPHONE JACK

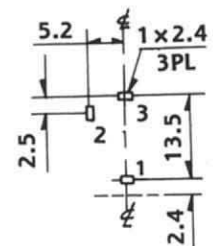
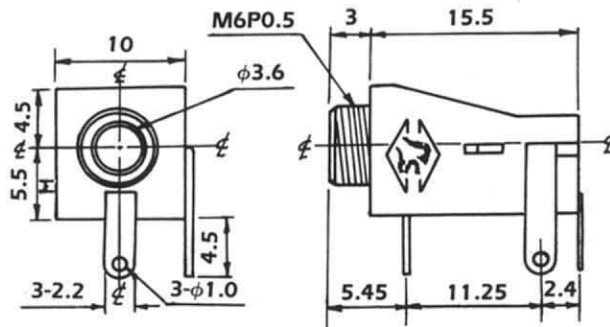
LJE0350



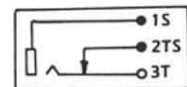
LJE0350-3RT STEREO



LJE0351 W/THREAD LJE0351A W/O THREAD

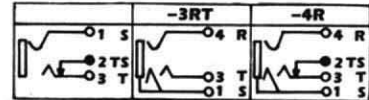
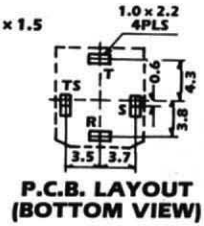
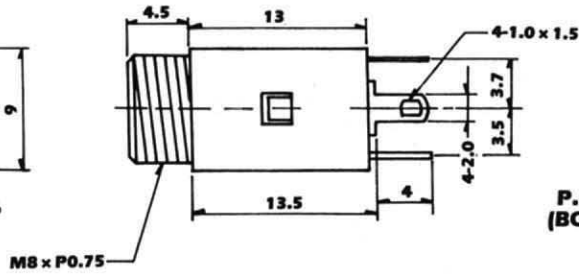
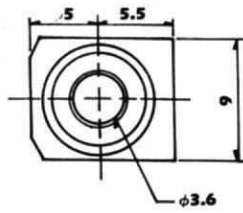


P.C.B. LAYOUT (BOTTOM VIEW)

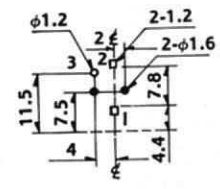
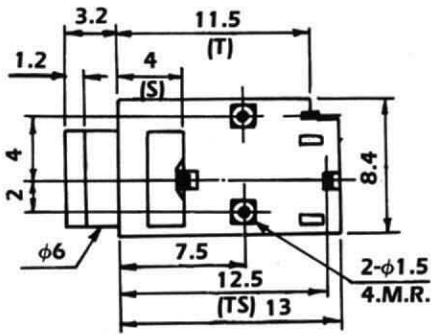
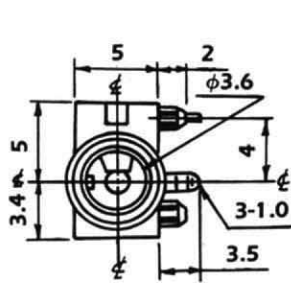


3.5φ EARPHONE JACK

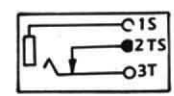
LJE0352



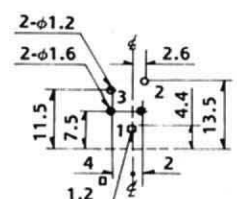
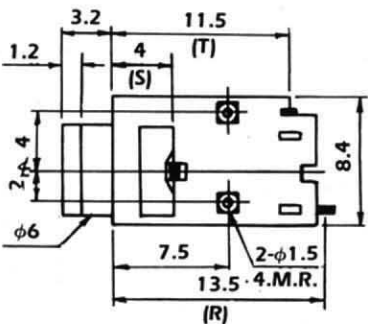
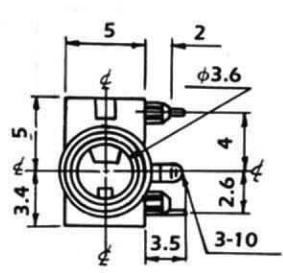
LJE0357-B



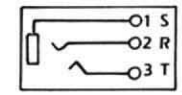
P.C.B. LAYOUT (BOTTOM VIEW)



LJE0357-3RT STEREO

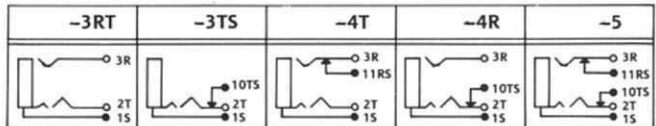
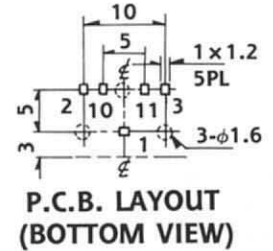
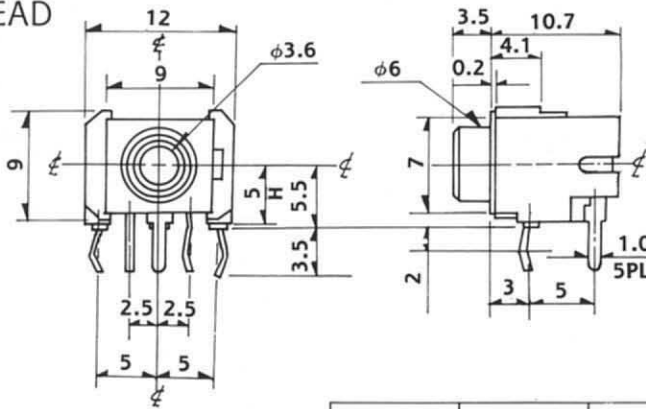
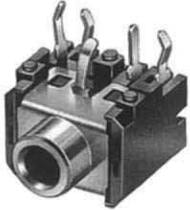


P.C.B. LAYOUT (BOTTOM VIEW)

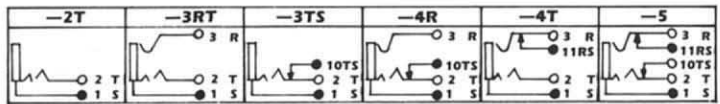
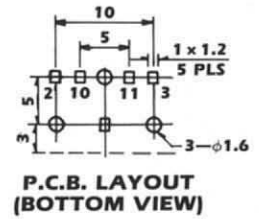
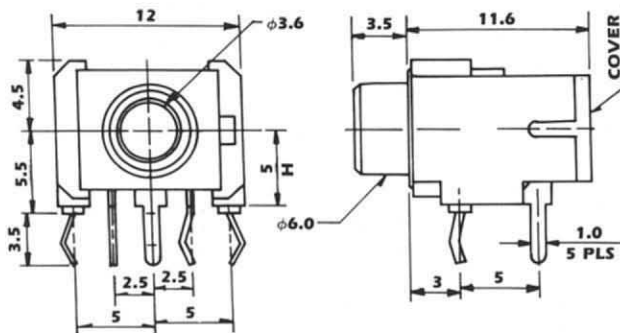
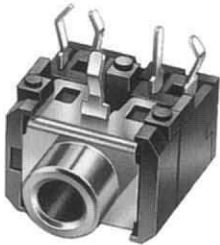


3.5 ϕ EARPHONE JACK

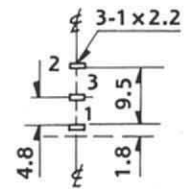
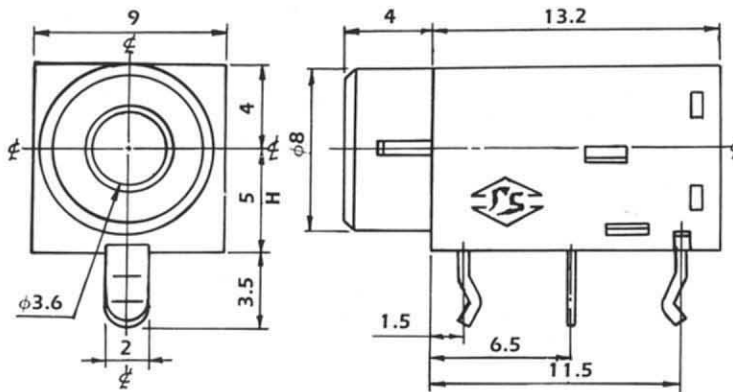
LJE0359A W/O THREAD
LJE0359 W/THREAD



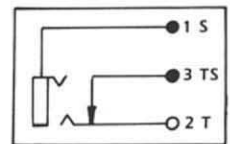
LJE0359AM W/O THREAD
LJE0359M W/THREAD



LJE0360

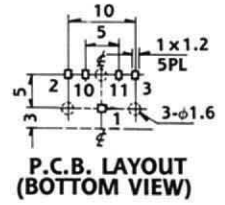
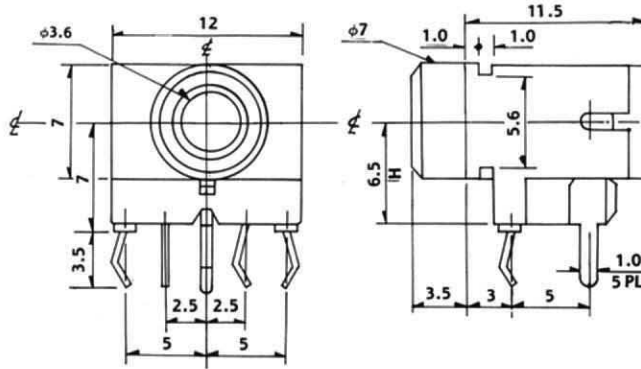


P.C.B. LAYOUT (BOTTOM VIEW)



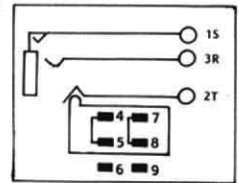
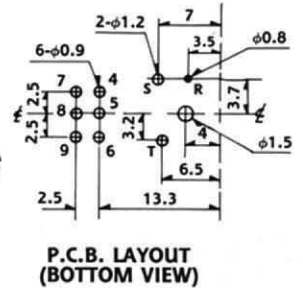
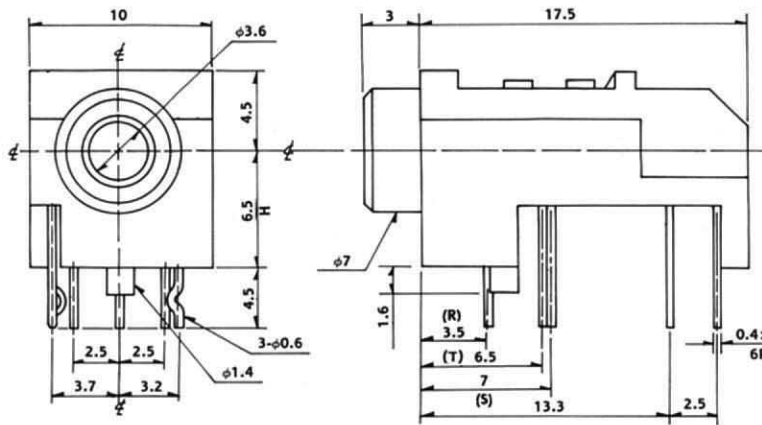
3.5 ϕ EARPHONE JACK

LJE0361



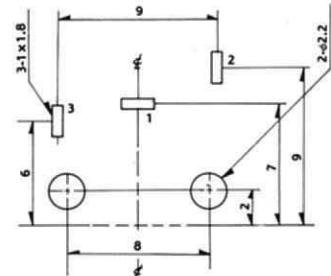
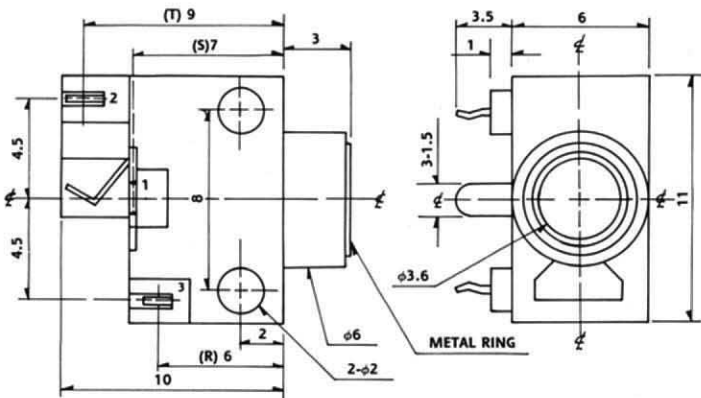
-3RT	-3TS	-4T	-4R	-5

LJE0362-9

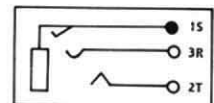


LJE0363A-3RT W/METAL RING STEREO

LJE0363-3RT W/O METAL RING

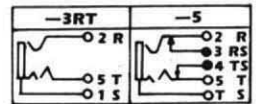
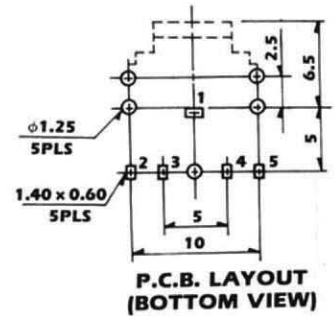
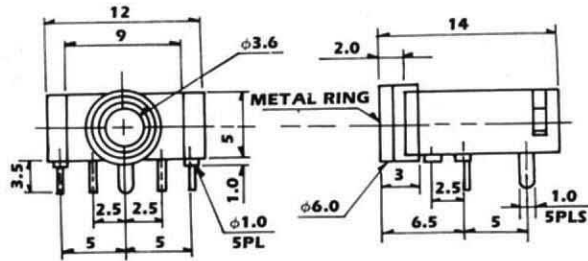


P.C.B. LAYOUT (BOTTOM VIEW)

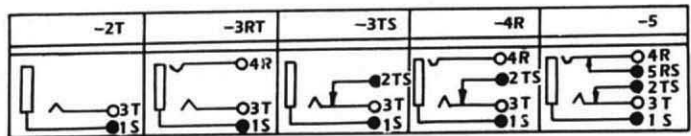
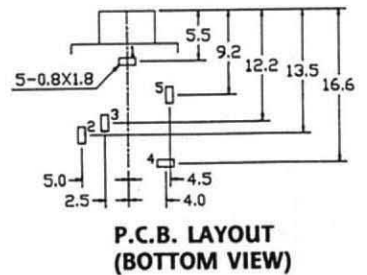
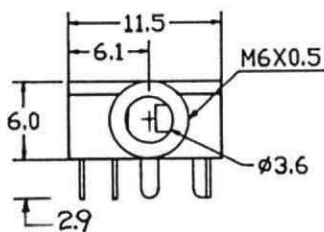


3.5φ EARPHONE JACK

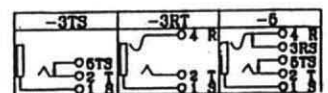
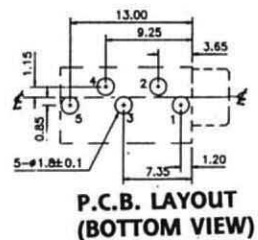
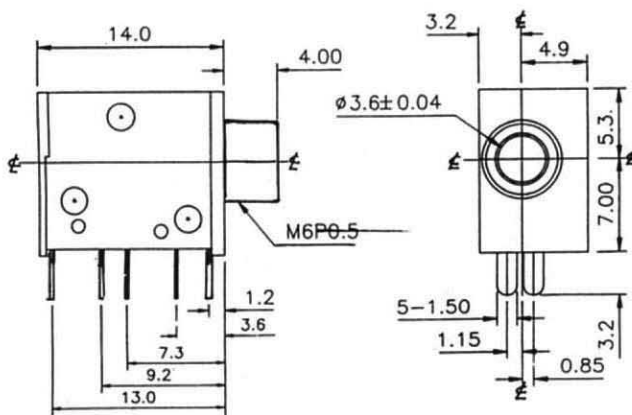
LJE0364



LJE0365

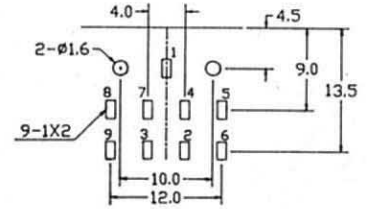
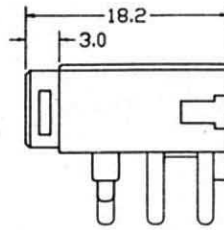
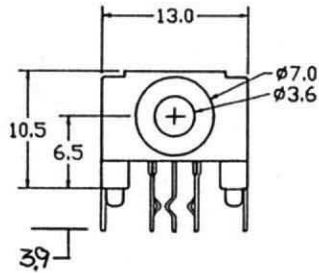


LJE0366AS W/O THREAD

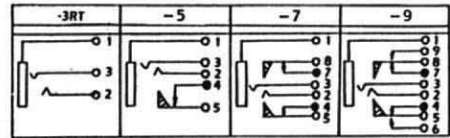


3.5 ϕ EARPHONE JACK

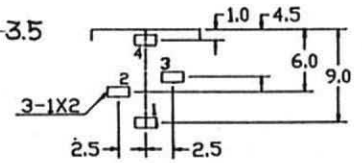
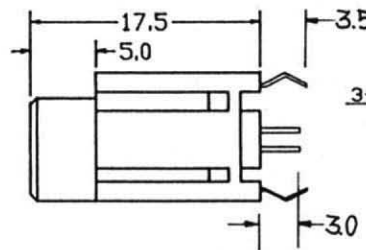
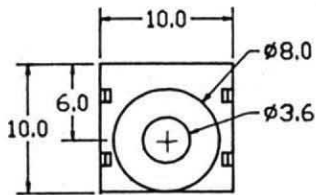
LJE0367



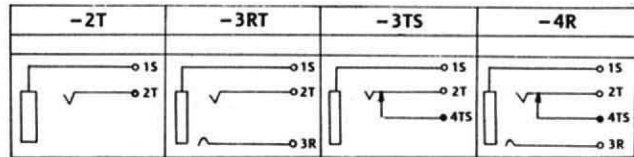
**P.C.B. LAYOUT
(BOTTOM VIEW)**



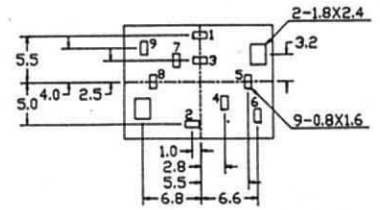
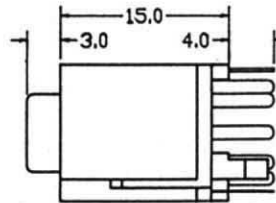
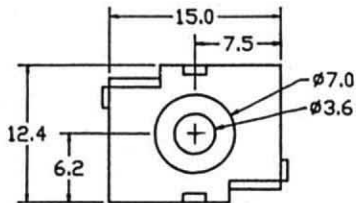
LJE0368



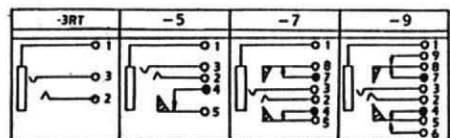
**P.C.B. LAYOUT
(BOTTOM VIEW)**



LJE0369

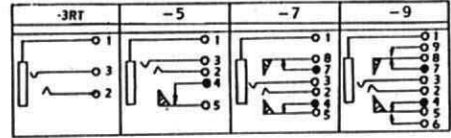
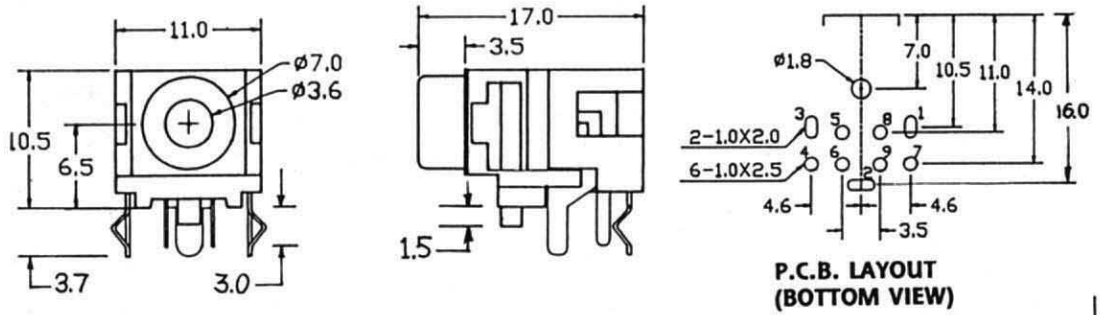


**P.C.B. LAYOUT
(BOTTOM VIEW)**

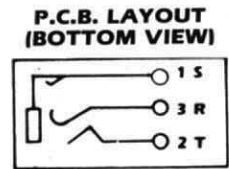
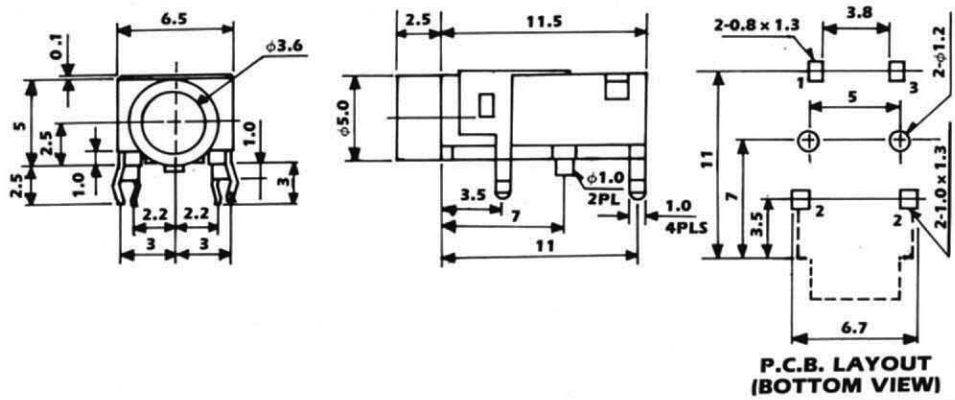


3.5 ϕ EARPHONE JACK

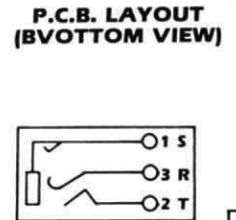
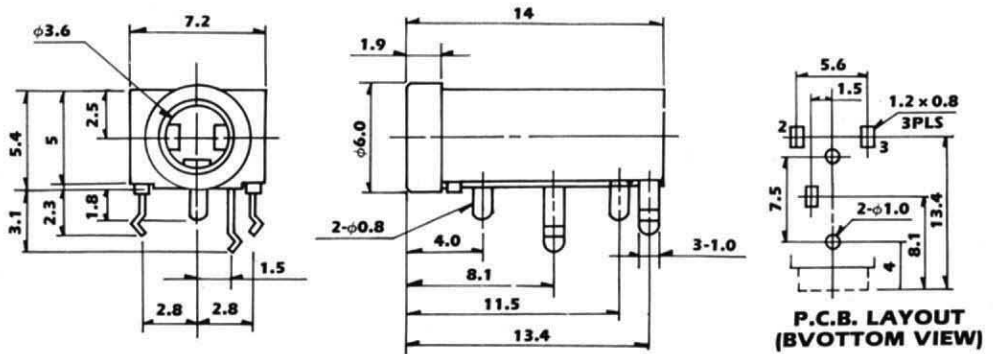
LJE0370



LJE3530K STEREO



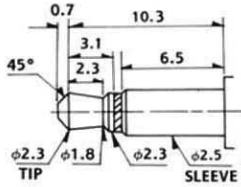
LJE3531 STEREO



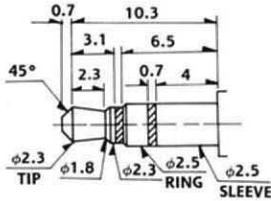
MATING PLUG

2.5 ϕ EARPHONE JACK

MONO



STEREO



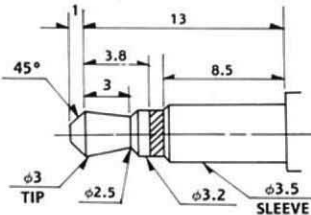
REQUIREMENTS

CONTACT RESISTANCE: 30m Ω max. (INITIAL)
 INSULATION RESISTANCE: 100M Ω min. AT 500V DC.
 WITHSTANDING VOLTAGE: 500V AC FOR ONE MINUTE.
 SOLDERING HEAT TEST: 260 \pm 5 $^{\circ}$ C FOR 5 \pm 1 SECONDS.
 INSERTION FORCE: 0.3-2.0 KG.
 EXTRACTION FORCE: 0.3-2.0 KG.
 LIFE TIME: 5,000 CYCLES min.

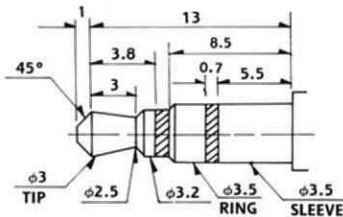
MATING PLUG

3.5 ϕ EARPHONE JACK

MONO



STEREO



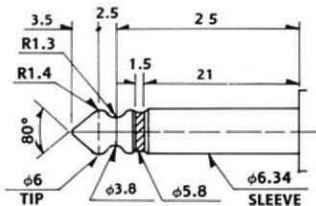
REQUIREMENTS

CONTACT RESISTANCE: 30m Ω max. (INITIAL)
 INSULATION RESISTANCE: 100M Ω min. AT 500V DC.
 WITHSTANDING VOLTAGE: 500V AC FOR ONE MINUTE.
 SOLDERING HEAT TEST: 260 \pm 5 $^{\circ}$ C FOR 5 \pm 1 SECONDS.
 INSERTION FORCE: 0.3-2.0 KG.
 EXTRACTION FORCE: 0.3-2.0 KG.
 LIFE TIME: 5,000 CYCLES min.

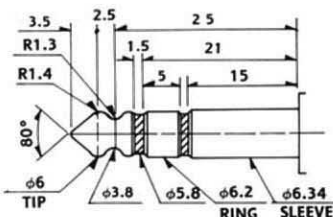
MATING PLUG

6.4 ϕ HEADPHONE JACK

MONO



STEREO



REQUIREMENTS

CONTACT RESISTANCE: 30m Ω max. (INITIAL)
 INSULATION RESISTANCE: 100M Ω min. AT 500V DC.
 WITHSTANDING VOLTAGE: 500V AC FOR ONE MINUTE.
 SOLDERING HEAT TEST: 260 \pm 5 $^{\circ}$ C FOR 5 \pm 1 SECONDS.
 INSERTION FORCE: 0.5-3.0 KG.
 EXTRACTION FORCE: 0.5-3.0 KG.
 LIFE TIME: 5,000 CYCLES min.